

PRECISION AND PERFORMANCE IN EVERY DIVERSE PRINT.



Impeccable print quality and spectacular accuracy with Epson's large format printers.

Epson's new SureColor large format printers are the next generation of high-performance signage printers, built with the latest printing technology. They feature an advanced precision media feeding system, high-performance printheads, and a range of advanced capabilities designed to handle demanding jobs reliably while keeping operational cost low.

ENGINEERED FOR **good**

ULTRACHROME
UV INK

EPSON ULTRACHROME
GS3 INK

Epson Edge Print PRO

PRECISIONCORE
PRINTHEAD

Exceptional Print Quality

Explore enhanced printing speeds with the latest Epson technology, thanks to an improved printhead width and increased nozzle count.

Super Reliability

High-volume printing is made ultra-reliable with an advanced precision media feeding system* to ensure minimal downtime.

Engineered For Convenience

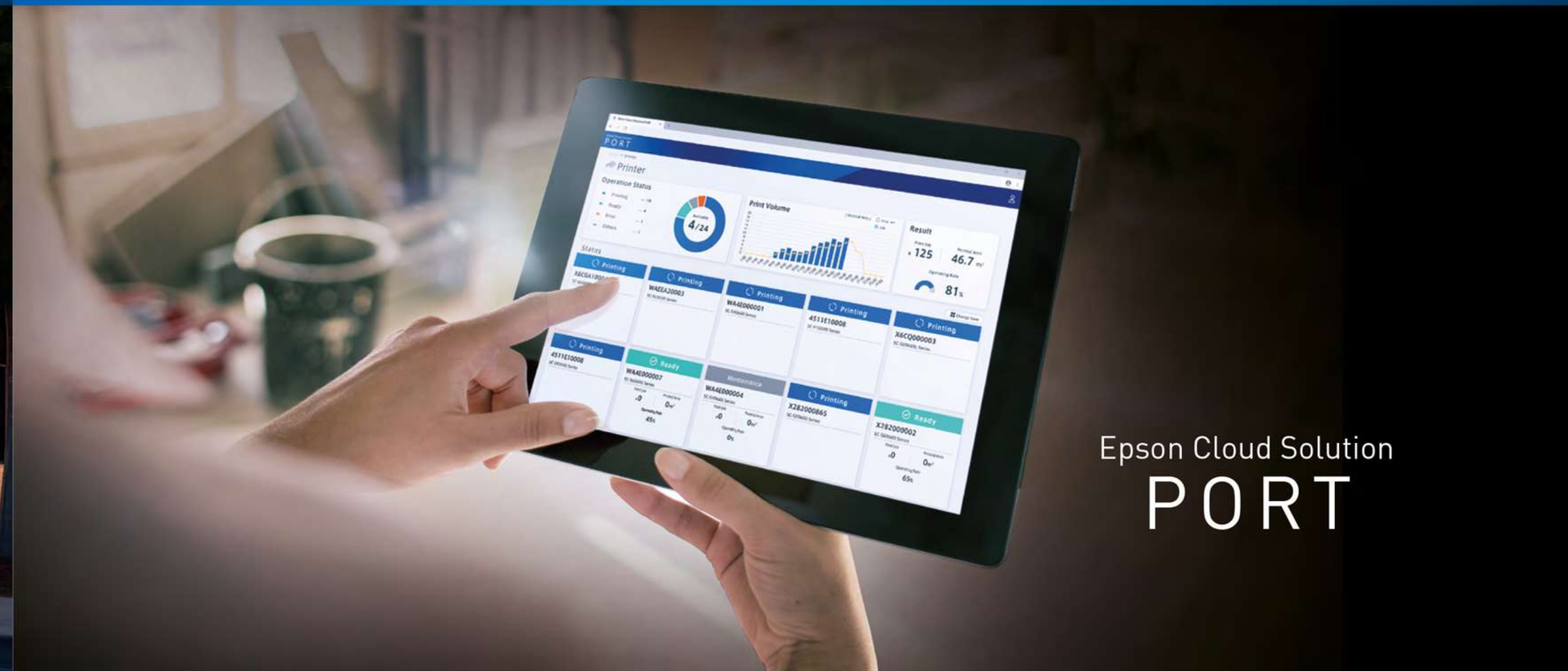
Epson's solutions such as Epson Cloud Solution PORT and Epson Edge Print PRO helps with ease of use and remote management during operations.

*The advanced precision media feeding system is available on selected models only.

INK AND PRINTHEAD TECHNOLOGY



EPSON TOTAL SOLUTION



Epson Cloud Solution
PORT

BRILLIANCE IN RELIABILITY

Leading the next generation of high-performance signage printers, the Epson SureColor printers are engineered with advanced functions and the latest printing technologies. With printheads tailor-made to cater to each ink type, the SureColor printers produce impeccable text and image sharpness across a wide range of ink and media with micron-level precision and reliability.

Upgraded Printhead

The upgraded printhead features an increased size to accommodate a total of 9,600 nozzles*, significantly more than the previous version. This larger configuration is specifically designed to boost productivity by enabling faster print speeds.



SC-S9130



SC-S80670

Superior Ink Technology

Advanced ink technology from Epson brings a wide gamut of colours that comes with high image quality. The inks are optimised to perform high quality images and reduce machine downtime.

Eco-Solvent Printing

Using Epson UltraChrome GS3 eco-solvent ink – including an all-new Green ink along with the option for White ink* – for outstanding photographic print quality, durability, and media compatibility.

Resin Printing

Epson's UltraChrome RS Ink offers wide substrate support. The odourless water-based ink enables the use of printed applications in sensitive environments.

UV Ink

Vibrant 10-colour* UltraChrome UV ink, including dedicated red and grey inks, ensures smooth gradation and natural grey effects. The availability of varnish ink creates a visual and tactile experience.



*For selected models only.

CONNECT. OPTIMISE. GROW

At Epson, we understand that having real-time information at your fingertips is vital to your daily operations. This is why we have introduced the Epson Cloud Solution PORT, an intuitive cloud-based remote monitoring software. Monitor and manage your fleet of printers effectively across multiple sites, or a single site. Epson Cloud Solution PORT can be accessed from multiple devices including PCs, smartphones and tablets.

Fleetwide Printer Management

When managing printer efficiency and usage, intelligent and intuitive production monitoring is essential for maximising productivity, connectivity, and growth. A clear and simple dashboard, drawing from vast amounts of usage data, provides the insight needed to make critical business decisions.

Remote Monitoring System

Designed with simplicity and security in mind, the Epson Cloud Solution PORT provides a live view of your printer fleet production, equipment utilisation, and service information to better manage efficiency and optimise your Epson printing workflow.



Remote Monitoring¹

View live status of the entire printer fleet, output production rates, printer status, errors, and equipment utilisation.



Production Efficiency Tracking & Reporting

Run reports to view total production efficiency, uptime, printer usage, and associated costs.



Dashboard Tracking

Create in-shop dashboard to internally communicate key performance metrics to employees.



Secure & Encrypted

Data stream and cloud are encrypted end-to-end to protect customers' privacy and usage data.



Mobile Access, No App Needed!

Optimised mobile website allows for easy, remote tracking of printer fleet while on the go.



Expedited Service Response

Epson support helps reduce downtime with fast, remote troubleshooting.

¹ All features of this system require an active internet connection and use of a supported browser.

PRINT APPLICATIONS FOR DIFFERENT SCENARIOS

Versatility meets convenience, fulfilling your different printing needs effortlessly.

ECO-SOLVENT

The eco-solvent inks are generally more suitable for general printing of indoor signages (i.e. on PVC material), offering a wide colour gamut and competitive cost per print.



Retail Signage



Event & Exhibition



Backlit



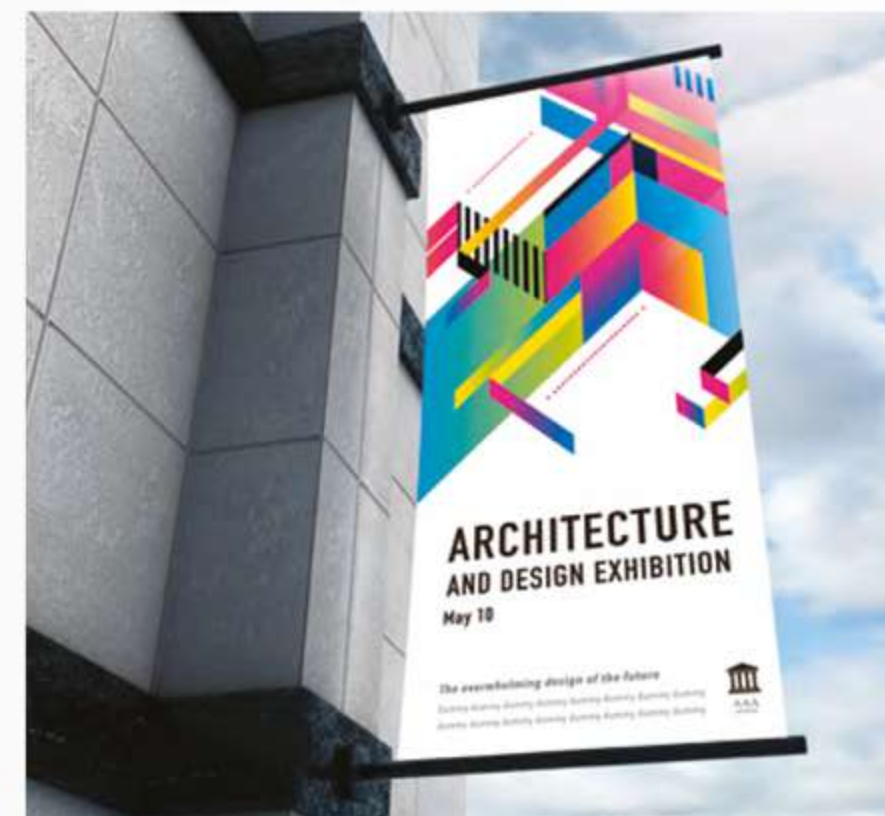
Window Graphic



Product Display

RESIN

The resin inks are recommended for unique printing applications. Because of 'instant lamination' and higher scratch durability finishing, the inks are more suitable for applications requiring such features.



Outdoor Signage



Vehicle Wrap



Wallpaper



Canvas



Textile

UV

UV printing uses a unique drying method compared to the traditional inks where instead of evaporation, they are cured using high-intensity UV lights. This allows operators to use UV printing on virtually any substrate, catering to a wider range of media.



Stainless Steel



Wall Display Tile



Acrylic Frame



Glass Facade



Wooden Panel



ECO-SOLVENT PRINTER

QUITE POSSIBLY THE BEST ECO-SOLVENT SIGNAGE PRINTERS EVER

Epson SureColor S-Series eco-solvent printers offer exceptional productivity, outstanding image quality, and iron-clad reliability.

With lightning-fast printing speeds and lamination capability, the SureColor S-Series printers empower you to turn around jobs fast. Additionally, the automated printer maintenance system lets you focus on printing, not on the printer.



SC-S7130 SC-S8130/SC-S9130

Latest Generation of Printhead

Upgraded PrecisionCore MicroTFP Printhead for faster print speed and increased productivity across all print modes.

64"

GS3
ULTRACHROME
GS3 INK

C M Y K
MAX. INK CAPACITY
PER COLOUR
800ml

Versatile Signage Printer

SC-S7130



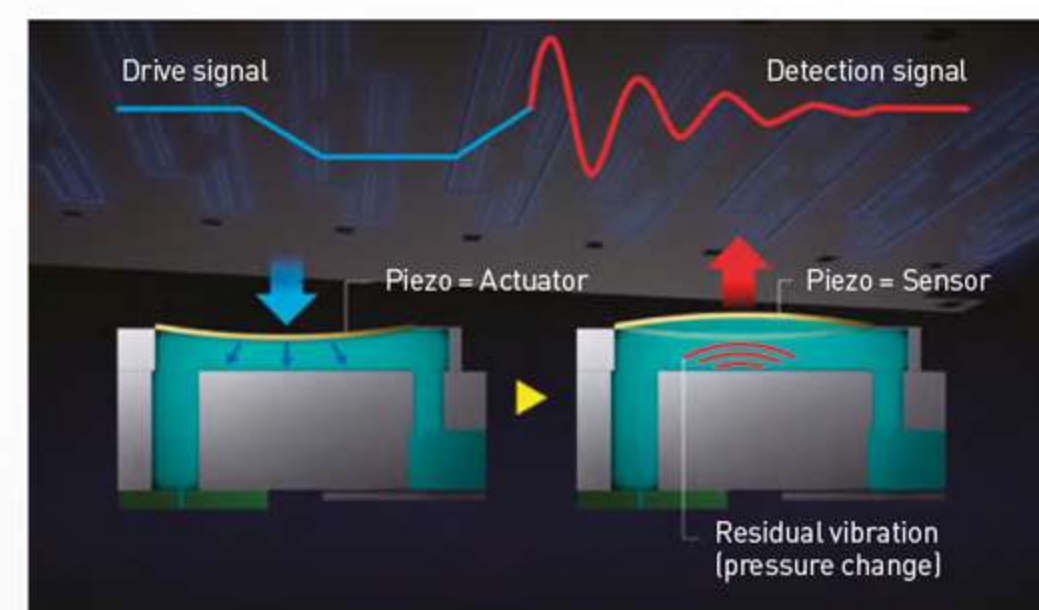
NEW
2025 MODEL

- Exceptional print quality at affordable cost of ownership
- Proven reliability and stable performance
- Improved print speed of up to 70.9m² per hour

Nozzle Verification Technology (NVT)

The Nozzle Verification Technology (NVT) automatically detects and compensates* for clogged nozzles while also triggering alerts for cleaning or halting printing to maintain consistent print quality.

*Automatic nozzle compensation is not supported on SC-S7130.



GREENGUARD Gold Certified

With low emission and VOC, GS3 inks are safe for indoor use.



Large Display Panel

The new tiltable 4.3" optical touch display panel offers a more intuitive user experience, allowing operation even with gloves on.



Temperature Sensor

The new Carriage Temperature Sensor, placed closer to the nozzle, ensures faster detection of temperature changes for more consistent colour reproduction.



Sharper Text

The new 'Text Sharpness' mode in Epson Edge Print PRO enhances fine text printing, delivering more precise and crisp text output.

Epson Edge Print PRO



ECO-SOLVENT PRINTER

REDUCE INK COSTS WITH BULK-INK EDITIONS

These printers break new ground in sign printing by drastically reducing ink costs. They offer fast print speeds, best-in-class high colour accuracy and lamination compatibility, along with the convenience and cost savings of bulk ink.

Innovative bulk-ink packs offer low ink cost, so you can print more at a lower ink cost per square foot. Plus, in addition to delivering longer, unattended printing, they reduce plastic waste compared to traditional cartridge systems.



Nozzle Temperature Sensor for Consistent Quality

A new temperature sensor near the ink discharge area ensures precise temperature control, maintaining consistent ink dispensing for improved colour accuracy from the first print to the last.

Hot Swap Ink System to Keep Production Moving

Only for SC-S8130

Epson's advanced Hot Swap Ink System automatically switches to a backup ink pack the moment one runs out — with zero interruption to your print job. That means no halts, no manual refills mid-job, and no wasted time.



Enhanced White Ink Output for Faster Results

Only for SC-S9130

The dual white ink channel enables higher white opacity output in less time, improving efficiency while maintaining vibrant, consistent results.

64"

GS3
ULTRACHROME
GS3 INK
WITH LC, LM



MAX. INK CAPACITY
PER COLOUR
1500ml



6-Colour Bulk-Ink Sign Printer

SC-S8130

NEW
2025 MODEL

- High productivity with superior stability and performance
- 6-colour ink set including Light Cyan and Light Magenta with Hot Swap feature for uninterrupted printing
- Faster print speed with up to 28% improvement*

*Based on default mode, 6 pass, 1200 x 600 dpi using adhesive vinyl comparing against the SC-S60670L.

64"

GS3
ULTRACHROME
GS3 INK
WITH GREEN



MAX. INK CAPACITY
PER COLOUR*
1500ml



11-Colour Bulk-Ink Sign Printer

SC-S9130

NEW
2025 MODEL

- Faster print speed and higher productivity with the latest generation PrecisionCore MicroTFP Printhead
- 11-colour ink set with Orange, Red and all new Green
- Dual-sized ink pack option to suit different production needs

*Cleaning Liquid is only available in 800ml pack.

Effortless Media Handling

Bundled media lifter allows for easier loading of heavy media, reducing strains and bending posture to prevent injuries.



1,500ml
Ink Packs



800ml
Ink Packs

Dual-Sized Ink Pack Option

Choose between 800ml or 1500ml packs to match production needs and minimise downtime.

R

RESIN PRINTER

HIGHLY VERSATILE, HIGH-PERFORMANCE RESIN PRINTERS

Epson SureColor R-Series 64" roll-to-roll printers are the perfect choice for high-volume shops looking for a fast, versatile printing solution. Tackle any signage job with the multi-purpose resin ink that delivers outstanding, repeatable colour on a wide range of media, including wallpapers, uncoated papers, and more. Blistering print speed and immediate lamination boost productivity. Plus, economical bulk-ink packs offer increased convenience and reduce the total cost of ownership.



Epson UltraChrome RS Resin Inks

Dries instantly for highly scratch-resistant prints that you can laminate immediately for faster turnaround.

Instant Lamination

Achieve fuss-free instant lamination with our durable water-based inks.



New Multi-Purpose Resin Ink

Delivers extremely accurate, reliably consistent, high-quality colour for repeat jobs, brand colours, wall tiling applications and more.

64"

RS3
ULTRACHROME
RS3 INK



MAX. INK CAPACITY
PER COLOUR
1500ml



Standard Resin Printer

SC-R5030

- Outstanding image quality and repeatable colour at production speeds
- Convenient, efficient 1500ml bulk-ink packs

64"

RS3
ULTRACHROME
RS3 INK



MAX. INK CAPACITY
PER COLOUR
3000ml
(1500ml x 2)



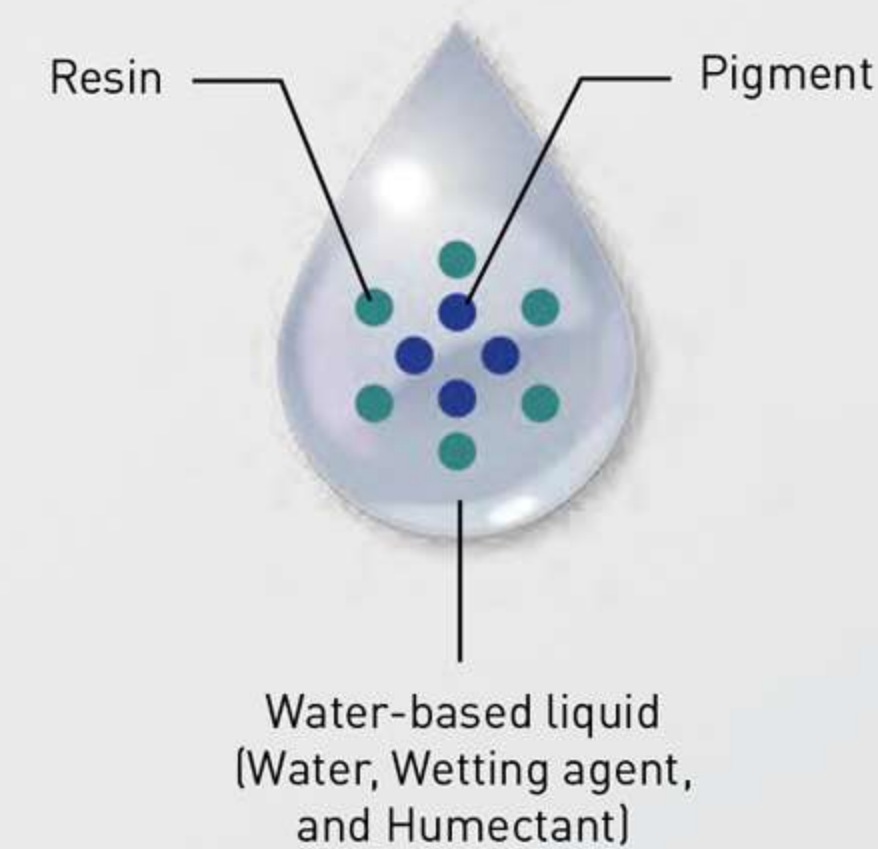
Supersized Bulk-Ink Resin Printer

SC-R5030L

- High-quality, colour-accurate output on a wide variety of media
- Cost-reducing 3000ml (1500ml x 2 packs) bulk-ink system
- Hot swap feature reduces printer down time

Q

What is Water-Based Resin?



Water-Based Resin Inks contain

- Water
- Resin
- Wetting Agent
- Humectant

The UltraChrome RS Ink forms a more uniform layer of ink on the print media, eliminating the existing challenge of diffused reflection from surfaces.





UV DESKTOP PRINTER

AMPLIFY CREATIVITY WITH CUSTOMISABLE NOVELTY GOODS

Designed for the competitive niche market of customisable products, the Epson SureColor V1030 is the perfect printer for businesses prioritising versatility and performance in their A4 desktop UV printing needs. The printer's extensive substrate compatibility, including wood and stainless steel, consistently delivers high-quality prints, providing new opportunities for businesses.



Note: Jigs are to be purchased separately.

Fine Print Quality

Achieve impeccable results with fine lines and sharp text on a wide range of compatible substrates. With Epson UltraChrome UV inks, users can expect vibrant outputs in every print.

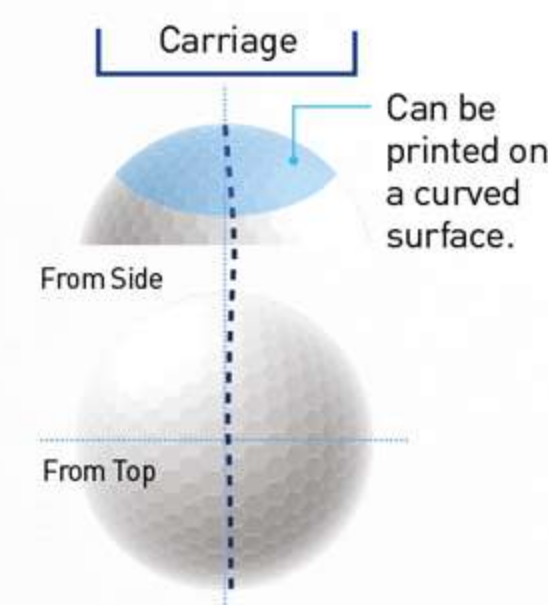


Smart Operation

The Auto Height Adjustment feature automatically adapts to substrates up to **70mm thick**, while the Wide Gap function enhances clarity on three-dimensional items like golf balls, pens, and phone cases, ensuring optimal printing performance.



Auto Height Adjustment



Wide Gap Function



Flexible Placement

With its compact design, the printer fits easily on desks or workbenches for easy job monitoring. The front operation streamlines maintenance and allows wire-free placement at the rear. Multiple units can be positioned side-by-side to maximise space.

A4 Desktop UV Printer

SC-V1030



UV
ULTRACHROME
UV INK

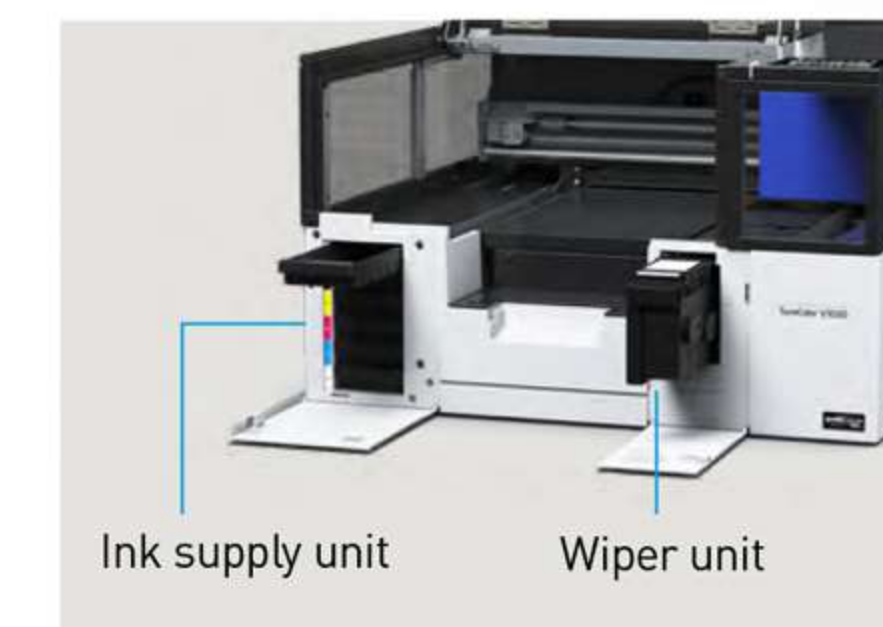


MAX. INK CAPACITY
PER COLOUR
140ml



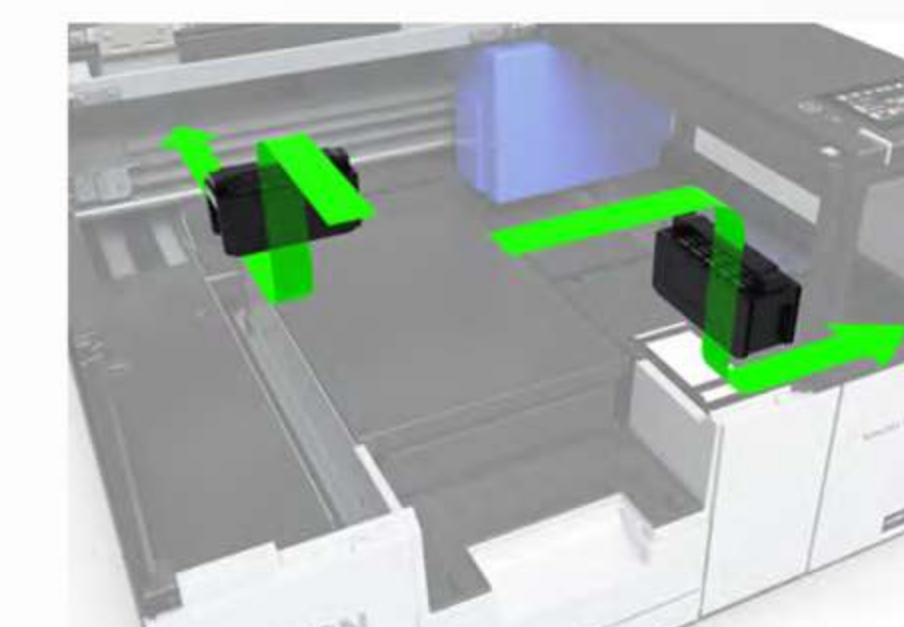
- High precision printing with crisp text and detailed images - perfect for small, customised products
- Compact front-loading design enables flexible placement in tight spaces
- Easy and safe maintenance with a no-ink-contact design - an automatic wiper unit that cleans and collect cured UV inks

Easy Maintenance and Operation



Safe Maintenance

Ink contact is minimised with an automatic wiper unit that cleans and collects cured UV inks.



Internal Air Circulation

With two built-in air filters that reduces odour, the printer is safe for operation in a closed environment.



Large Display Panel

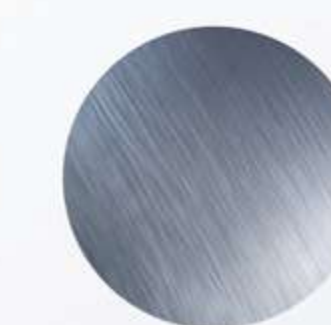
Effortlessly manage and oversee your print jobs, monitor ink levels, and perform printhead cleaning using the LED display panel. The panel also provides convenient visibility in low-light environments.

Print on Variety of Substrates

Print directly onto a large variety of substrates including wood, stainless steel, acrylic, plastics, ceramic, and more. Businesses can provide high-value novelty goods that are unique and personalised, offering customised products that are not commonly found.



Wood



Stainless Steel



Acrylic



Plastics



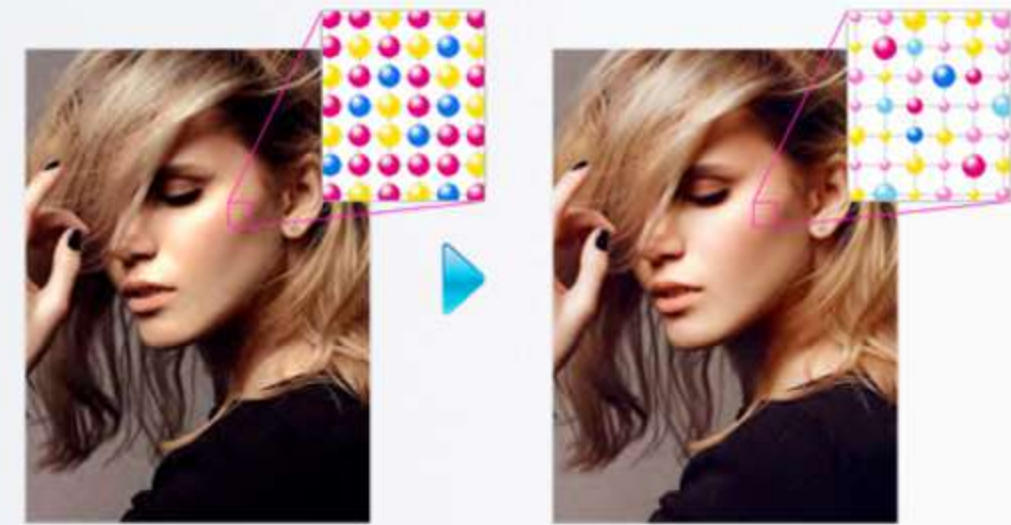
Ceramic

V

UV FLATBED PRINTER

PRODUCTION UV FLATBED PRINTER

With the ability to print directly on a wide variety of rigid substrates up to 80mm thick, the Epson SureColor V7000 flatbed printer offers a cost-effective solution for expanding your shop's capabilities. Featuring 10-colour UltraChrome UV Ink, including red and grey inks, it produces bright, colourful, tactile high-quality prints with smooth gradation and neutral greys in record time. Plus, the quick media loading and easy alignment, along with intuitive RIP software makes the SC-V7000 a breeze to use.



Other brands

Epson SC-V7000 with Variable Droplet

Epson UltraChrome UV Inks

With up to 10-colour ink set that provide low graininess and banding, the UV flatbed printer provides highly vivid and consistent prints with its striking reds and stunning colours.



Wide Media Usage

Automatic detection and adjustment to accommodate media of up to 80mm thick. The four zone vacuum can easily hold media in place securely.



White Ink and Varnish

Producing rich, high-quality prints on a variety of materials, the white ink and varnish enable operators to print glossy finishes, various textures, and more.

Flatbed UV Printer

SC-V7000

2.50m
by
1.25m

UV
ULTRACHROME
UV INK



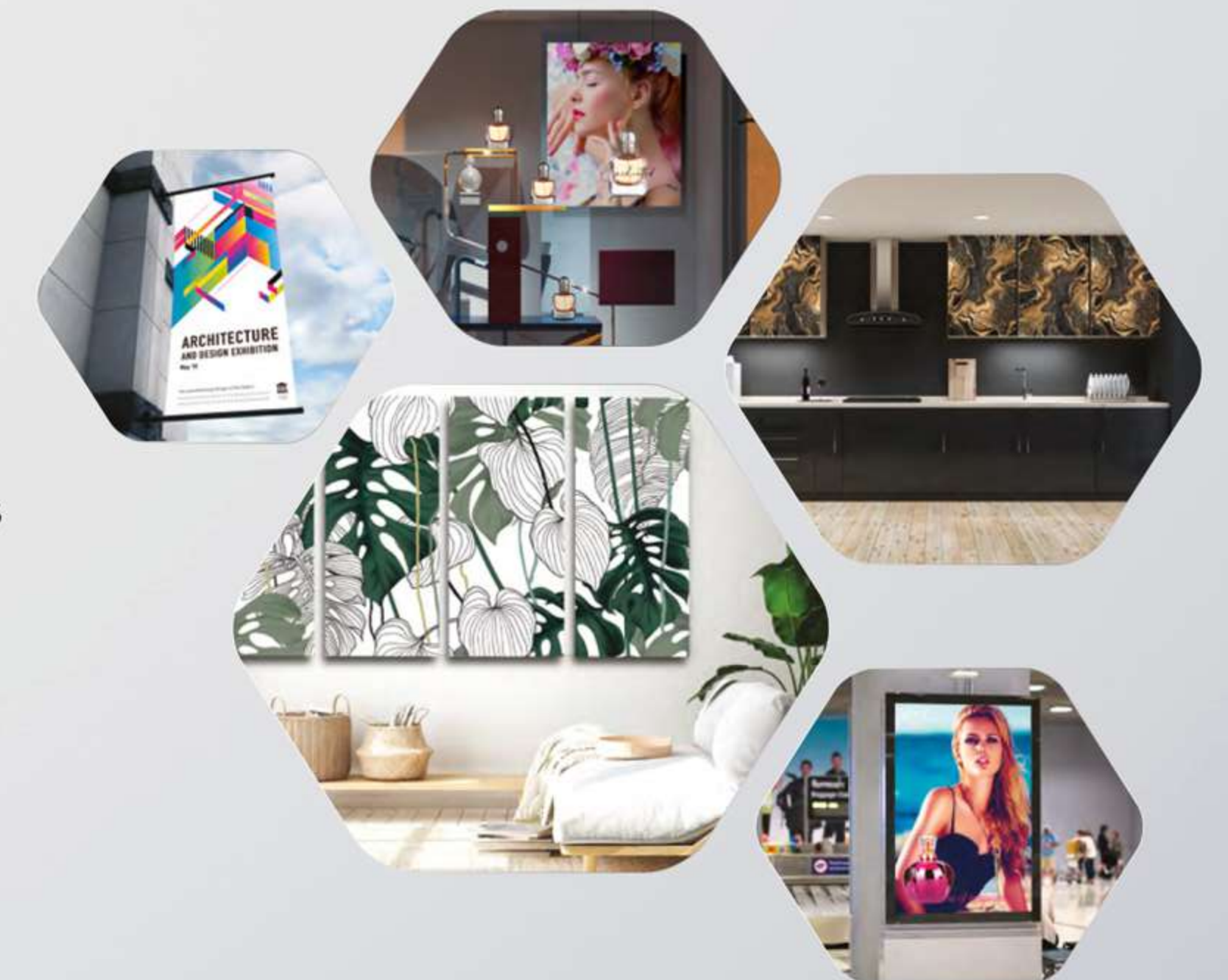
MAX. INK CAPACITY
PER COLOUR
1000ml



- Prints on media and rigid substrates up to 2.50m by 1.25m and 80mm thick
- Delivers outstanding quality prints at true production speed
- Includes Epson Edge Print PRO software

Versatility Redefined

Epson's SC-V7000 reinvents what large format printers can offer, allowing businesses to print directly on a wide variety of substrates* up to 80mm media thickness. This includes vinyl, textile, canvas, film, aluminium composite boards and styrofoam boards. The possibilities to create with the SC-V7000 are limitless!



*Some materials will require pre-treatment. Contact Epson to find out more.

SURECOLOR SIGNAGE PRINTERS

ECO-SOLVENT PRINTING

MODEL NUMBER

PRINT

Technology

Printhead

Maximum Resolution

Print Speed

INK

Name

Colour

Capacity

Ink Type

MEDIA HANDLING

Paper Path

Maximum Roll Diameter/Weight

Maximum Reel Diameter/Weight

CONNECTIVITY

Interface

Printer Language

Memory

ENVIRONMENTAL CHARACTERISTICS

Temperature

Humidity

DIMENSIONS & WEIGHT

Printer Dimension (W) (mm) - Max

Printer Dimension (D) (mm) - Max

Printer Dimension (H) (mm) - Max

Weight

SYSTEM

Win PC System Requirement



NEW
2025 MODEL

SC-S7130

PrecisionCore Inkjet,
Variable-Sized Droplet Technology

PrecisionCore MicroTFP Printhead

1440 x 1440 dpi

4 Pass – Up to 18.5 m²/h (Banner 600 x 600 dpi)
6 Pass – Up to 13.0 m²/h (PVC, 600 x 1200 dpi)
16 Pass – Up to 4.5 m²/h (Film 1200 x 1200 dpi)

Epson UltraChrome GS3 Ink

Cyan, Magenta, Yellow, Black

800ml

Ink Pack

Friction Feed

Max. 250mm / 45kg

Max. 200mm

Hi-Speed USB 3.0, 100BASE-TX/1000BASE-T

ESC/P Raster

1GB

Operating: 15°C to 35°C
(20°C to 32°C recommended)

Operating: 20 – 80%
(40 to 60% recommended)

2620

880

1338

Approx. 278kg

OS: Win10x64 or higher
Processor: Intel® Core™ i3 3.0 GHz or faster
Memory: 8GB or more
Storage: 500GB or more
Display Resolution: 1280 x 1024 or higher

SURECOLOR SIGNAGE PRINTERS

ECO-SOLVENT PRINTING

MODEL NUMBER

PRINT

Technology

Printhead

Maximum Resolution

Print Speed

INK

Name

Colour

Capacity

Ink Type

MEDIA HANDLING

Paper Path

Maximum Roll Diameter/Weight

Maximum Reel Diameter/Weight

CONNECTIVITY

Interface

Printer Language

Memory

ENVIRONMENTAL CHARACTERISTICS

Temperature

Humidity

DIMENSIONS & WEIGHT

Printer Dimension (W) (mm) - Max

Printer Dimension (D) (mm) - Max

Printer Dimension (H) (mm) - Max

Weight

SYSTEM

Win PC System Requirement



NEW
2025 MODEL

SC-S8130

PrecisionCore Inkjet,
Variable-Sized Droplet Technology

PrecisionCore MicroTFP Printhead

1200 x 1200 dpi

4 pass – Up to 33.3 m²/h (Banner 600 x 600 dpi)
6 pass – Up to 22.6 m²/h (PVC 1200 x 600 dpi)
16 pass – Up to 8.6 m²/h (Film 1200 x 1200 dpi)

Epson UltraChrome GS3 Ink

Cyan, Magenta, Yellow, Black,
Light Cyan, Light Magenta

800ml / 1500ml

Ink Pack

Friction Feed

Max. 250mm / 45kg

Max. 250mm

Hi-Speed USB 3.0, 100BASE-TX/1000BASE-T

ESC/P Raster

4GB

Operating: 15°C to 35°C
(20°C to 32°C recommended)

Operating: 20 – 80%
(40 to 60% recommended)

2620

925

1021

Approx. 340kg

Approx. 323.4kg

OS: Win10x64 or higher
Processor: Intel® Core™ i3 3.0 GHz or faster
Memory: 8GB or more
Storage: 500GB or more
Display Resolution: 1280 x 1024 or higher



NEW
2025 MODEL

SC-S9130

PrecisionCore Inkjet,
Variable-Sized Droplet Technology

PrecisionCore MicroTFP Printhead

1200 x 1200 dpi

4 pass – Up to 33.3 m²/h (Banner 600 x 600 dpi)
6 pass – Up to 22.6 m²/h (PVC 1200 x 600 dpi)
16 pass – Up to 8.6 m²/h (Film 1200 x 1200 dpi)

6 pass – Up to 20.1 m²/h (Banner 600 x 600 dpi)
10 pass – Up to 14 m²/h (PVC 1200 x 600 dpi)
17 pass – Up to 7.2 m²/h (Film 1200 x 600 dpi)

Epson UltraChrome GS3 Ink

Cyan, Magenta, Yellow, Black,
Light Cyan, Light Magenta, Light Black,
Orange, Red, Green, White or Cleaning Liquid

800ml / 1500ml

Ink Pack

Friction Feed

Max. 250mm / 45kg

Max. 250mm

Hi-Speed USB 3.0, 100BASE-TX/1000BASE-T

ESC/P Raster

4GB

Operating: 15°C to 35°C
(20°C to 32°C recommended)

Operating: 20 – 80%
(40 to 60% recommended)

2620

925

1021

Approx. 340kg

Approx. 323.4kg

OS: Win10x64 or higher
Processor: Intel® Core™ i3 3.0 GHz or faster
Memory: 8GB or more
Storage: 500GB or more
Display Resolution: 1280 x 1024 or higher

SURECOLOR SIGNAGE PRINTERS

RESIN PRINTING

MODEL NUMBER

PRINT

Technology

Printhead

Maximum Resolution

Print Speed

INK

Name

Colour

Capacity

Ink Type

MEDIA HANDLING

Paper Path

Maximum Roll Diameter/Weight

Maximum Reel Diameter/Weight

CONNECTIVITY

Interface

Printer Language

Memory

ENVIRONMENTAL CHARACTERISTICS

Temperature

Humidity

DIMENSIONS & WEIGHT

Printer Dimension (W) (mm) - Max

Printer Dimension (D) (mm) - Max

Printer Dimension (H) (mm) - Max

Weight

SYSTEM

Win PC System Requirement



SC-R5030

SC-R5030L

PrecisionCore Inkjet,
Variable-Sized Droplet Technology

PrecisionCore TFP Printhead

1200 x 2400 dpi with 600 x 600 dpi 8 Half Tone layers

Adhesive Vinyl, Paper/Other: 9 Pass Production 15.1 m²/h
Banner, Non-woven Wallpaper: 6 Pass Production 21.0m²/h
Textile: 14 Pass Production 9.5 m²/h
Film: 26 Pass Production 5.2 m²/h

Epson UltraChrome RS Ink

Cyan, Magenta, Yellow, Black, Light Cyan, Light Magenta

1500ml

1500ml x 2

Ink Pack

Friction Feed

Max. 250mm / 45kg

Max. 200mm / 45kg

USB (Hi-speed USB), 100BASE-TX/1000BASE-T

ESC/P Raster

2GB

Operating: 15°C to 30°C
(20°C to 32°C recommended)

Operating: 20 – 80%
(40 to 60% recommended)

2949

1045

1774

Approx. 425kg

Approx. 449kg

OS: Win10x64 or higher
Processor: Intel® Core™ i3 3.0 GHz or faster
Memory: 8GB or more
Storage: 500GB or more
Display Resolution: 1280 x 1024 or higher

SURECOLOR SIGNAGE PRINTERS

UV PRINTING

MODEL NUMBER

PRINT

Technology

Printhead

Maximum Resolution

Print Speed

INK

Name

Colour

Capacity

Ink Type

MEDIA HANDLING

Maximum Media Size

Maximum Media Thickness/Weight

CONNECTIVITY

Interface

Printer Language

Memory

ENVIRONMENTAL CHARACTERISTICS

Temperature

Humidity

DIMENSIONS & WEIGHT

Printer Dimension (W) (mm) - Storage

Printer Dimension (D) (mm) - Storage

Printer Dimension (H) (mm) - Storage

Weight

SYSTEM

Win PC System Requirement



SC-V1030

SC-V7000

MicroPiezo Inkjet,
Variable-Sized Droplet Technology

MicroPiezo Printhead

1440 x 1440 dpi

12 Pass (Colour) –
0.89 m²/h (720 x 720 dpi)
16 Pass (White) –
0.65 m²/h (1440 x 720 dpi)

Epson UltraChrome UV Ink

Cyan, Magenta, Yellow, Black,
White, Varnish

140ml

Ink Pack

Max. 210 x 297mm

70 mm

Super-Speed USB (Compatible with the
USB 3.0 Specification), 100BASE-TX /
1000BASE-T / IEEE802.11b/g/n/az/ac

ESC/P Raster

1GB

Operating: 15°C to 30°C

Operating: 20 – 80%
(40 to 60% recommended)

699

699

426

Approx. 59kg

OS: Win10x64 or higher
Processor: Intel® Core™ i3 3.0 GHz or faster
Memory: 8GB or more
Storage: 500GB or more
Display Resolution: 1280 x 1024 or higher

MicroPiezo Inkjet,
Variable-Sized Droplet Technology

MicroPiezo Printhead

720 x 1440 dpi

Colour High Speed – Up to 43.1 m²/h (360 x 720 dpi)
Speed – Up to 23.2 m²/h (720 x 720 dpi)
Production – Up to 15.3 m²/h (720 x 720 dpi)
Quality – Up to 10.5 m²/h (720 x 1080 dpi)
High Quality – Up to 4.8 m²/h (720 x 1440 dpi)

Epson UltraChrome UV Ink

Cyan, Magenta, Yellow, Black,
Light Cyan, Light Magenta,
Grey, Red, White, Varnish

1000ml

Ink Bottle

Max. 2500 x 1250mm

Max. 80mm / Max. 50kg/m² (non-concentrated)
Suction System User Selectable 4 Zones
(X Axis: 2 Zones. Y Axis: 2 Zones)

Super-Speed USB (Type-B)

N/A

N/A

Operating: 15°C to 35°C
(20°C to 32°C recommended)

Operating: 20 – 80%
(40 to 60% recommended)

4635

2768

1730

Approx. 1,370kg

SIGNAGE CONSUMABLES & OPTIONS

PRINTER MODELS

SC-S7130



Description	Ink Capacity	Product Code
Black Ink	800ml	C13T51S100
Cyan Ink	800ml	C13T51S200
Magenta Ink	800ml	C13T51S300
Yellow Ink	800ml	C13T51S400
Light Cyan Ink		
Light Magenta Ink		
Grey Ink		
Light Black Ink		
Orange Ink		
Red Ink		
Green Ink		
White Ink		
Cleaning Liquid	800ml	C13T56L000
Varnish		
Optimiser		
Maintenance Liquid		
Maintenance Parts Kit		C13S210164
Ink Cleaner		C13T699300
Cleaning Stick		C13S090013
Clean Room Wiper		C13S090016
Waste Ink Bottle		C13T724000
Wiper Unit		
Cleaning Kit		
Coolant		
Bulk Ink Solution		
Substrate Support System		C12C932361
Additional Print Drying System		C12C932381
Option Set* <small>*Includes Bulk Ink Solution, Substrate Support System and Curing heater.</small>		
Media Edge Plate		C12C932411
Media Lifter		
Head Installation Kit		
Document Pack		

CONSUMABLES

OPTIONS

SIGNAGE CONSUMABLES & OPTIONS

PRINTER MODELS

SC-S8130



SC-S9130



Description	Ink Capacity	Product Code	Ink Capacity	Product Code	Ink Capacity	Product Code	Ink Capacity	Product Code
Black Ink	800ml	C13T51S100	1500ml	C13T51Y100	800ml	C13T51S100	1500ml	C13T51Y100
Cyan Ink	800ml	C13T51S200	1500ml	C13T51Y200	800ml	C13T51S200	1500ml	C13T51Y200
Magenta Ink	800ml	C13T51S300	1500ml	C13T51Y300	800ml	C13T51S300	1500ml	C13T51Y300
Yellow Ink	800ml	C13T51S400	1500ml	C13T51Y400	800ml	C13T51S400	1500ml	C13T51Y400
Light Cyan Ink	800ml	C13T51S500	1500ml	C13T51Y500	800ml	C13T51S500	1500ml	C13T51Y500
Light Magenta Ink	800ml	C13T51S600	1500ml	C13T51Y600	800ml	C13T51S600	1500ml	C13T51Y600
Grey Ink								
Light Black Ink					800ml	C13T51S700	1500ml	C13T51Y700
Orange Ink					800ml	C13T51S800	1500ml	C13T51Y800
Red Ink					800ml	C13T51S900	1500ml	C13T51Y900
Green Ink					800ml	C13T51SF00	1500ml	C13T51YF00
White Ink					800ml	C13T51SA00	1500ml	C13T51YA00
Cleaning Liquid	800ml	C13T56L000			800ml	C13T51L000		
Varnish								
Optimiser								
Maintenance Liquid								
Maintenance Parts Kit							C13S210153	
Ink Cleaner							C13T699300	
Cleaning Stick							C13S090013	
Clean Room Wiper							C13S090016	
Waste Ink Bottle							C13T724000	
Wiper Unit								
Cleaning Kit								
Coolant								
Bulk Ink Solution								
Substrate Support System								
Additional Print Drying System								
Option Set* <small>*Includes Bulk Ink Solution, Substrate Support System and Curing heater.</small>								
Media Edge Plate								
Media Lifter								
Head Installation Kit								
Document Pack								

CONSUMABLES

OPTIONS

SIGNAGE CONSUMABLES & OPTIONS

PRINTER MODELS

SC-R5030



SC-R5030L



Description

	Ink Capacity	Product Code	Ink Capacity	Product Code
Black Ink	1500ml	C13T48D100	1500ml x 2	C13T45R100
Cyan Ink	1500ml	C13T48D200	1500ml x 2	C13T45R200
Magenta Ink	1500ml	C13T48D300	1500ml x 2	C13T45R300
Yellow Ink	1500ml	C13T48D400	1500ml x 2	C13T45R400
Light Cyan Ink	1500ml	C13T48D500	1500ml x 2	C13T45R500
Light Magenta Ink	1500ml	C13T48D600	1500ml x 2	C13T45R600
Grey Ink				
Light Black Ink				
Orange Ink				
Red Ink				
White Ink				
Cleaning Liquid				
Varnish			1500ml	C13T45X100
Optimiser				
Maintenance Liquid	1500ml	C13T48D700	1500ml x 2	C13T45R700
Maintenance Parts Kit	1500ml	C13T48D800	1500ml x 2	C13T45R800
Ink Cleaner				
Cleaning Stick				
Clean Room Wiper		C13S090013		C13S090013
Waste Ink Bottle		C13S090016		C13S090016
Wiper Unit		C13S210071		C13S210071
Cleaning Kit		C13S210100		C13S210100
Coolant		C13S210103		C13S210103
Bulk Ink Solution				
Substrate Support System				
Additional Print Drying System				
Option Set* *Includes Bulk Ink Solution, Substrate Support System and Curing heater.		C12C935291		C12C935291
Media Edge Plate		C12C935321		C12C935321
Media Spacer		C12C937271		C12C937271
Head Installation Kit				
Document Pack				

CONSUMABLES

OPTIONS

SIGNAGE CONSUMABLES & OPTIONS

PRINTER MODELS

SC-V1030



SC-V7000



Description

	Ink Capacity	Product Code	Ink Capacity	Product Code
Black Ink	140ml	C13T53R120	1000ml	C13T49V110
Cyan Ink	140ml	C13T53R220	1000ml	C13T49V210
Magenta Ink	140ml	C13T53R320	1000ml	C13T49V310
Yellow Ink	140ml	C13T53R420	1000ml	C13T49V410
Light Cyan Ink			1000ml	C13T49V510
Light Magenta Ink			1000ml	C13T49V610
Grey Ink			1000ml	C13T49V710
Light Black Ink				
Orange Ink				
Red Ink			1000ml	C13T49V810
White Ink	140ml	C13T53RA20	1000ml	C13T49V910
Cleaning Liquid			1000ml	C13T49V010
Varnish	140ml	C13T53RV20	1000ml	C13T49VA10
Optimiser				
Maintenance Liquid				
Maintenance Parts Kit				
Ink Cleaner				
Cleaning Stick				
Clean Room Wiper				
Waste Ink Bottle				C13T724000
Wiper Unit		C13S210146		
Cleaning Kit		C13S210148		
Coolant				C13S210135
Bulk Ink Solution				
Substrate Support System				
Additional Print Drying System				
Option Set* *Includes Bulk Ink Solution, Substrate Support System and Curing heater.				
Media Edge Plate				
Media Spacer				
Head Installation Kit				C12C935921
Document Pack				C12C936421

CONSUMABLES

OPTIONS

Distributed by:



To find out more, visit www.computergraphics.com.ph